

CERTIFICATE OF LOCATION OF GOVERNMENT CORNER

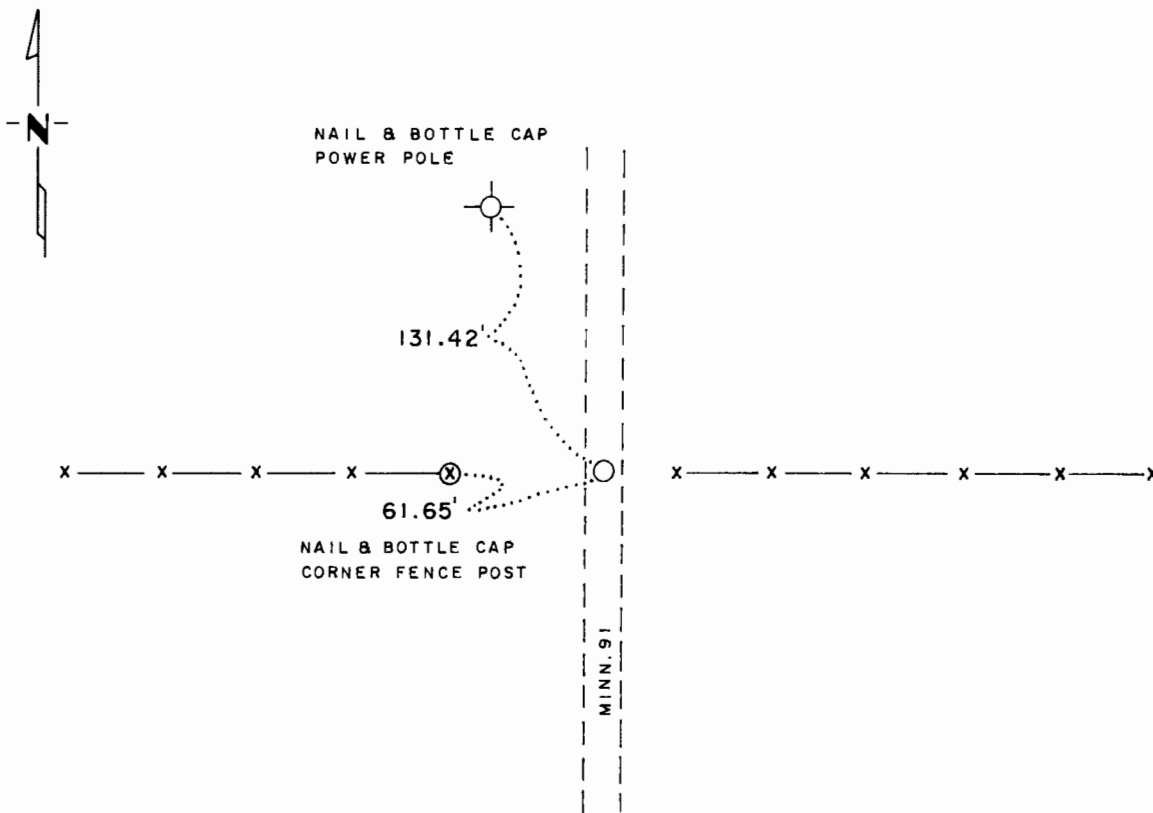
Northeast Corner of Section 36, Township 106, Range 43, 5 P.M.

STATE OF MINNESOTA, County of MURRAY

At the corner location shown on the sketch:

- On _____ found a _____
DATE
- left monument as found, lowered monument, removed monument (explain)
- On Sept. 73 placed a Railroad Spike
DATE

SKETCH OF REFERENCE TIES



Statement of evidence relative to this corner location is on back of page.

I hereby certify that this document and the data contained herein was prepared by me or under my direct supervision.

Bert R. Eveland 7-29-80
SIGNATURE DATE

Registration No. 10516

- Land Surveyor, Professional Engineer
- County Surveyor, County Engineer

OFFICE OF THE REGISTER OF DEEDS

County of Murray

I hereby certify that this document was filed in the Reg. of Deeds office at 8:30 a. M. on the 9th day of October A.D., 19 81

Register of Deeds Willard W. Ohme

By _____, Deputy

DOCUMENT NO. 164607

Statement of Evidence:

MINNESOTA DEPARTMENT OF NATURAL RESOURCES, BUREAU OF ENGINEERING

Northeast Corner of Section 36, Township 106, Range 43, 5 P.M.

Corner was originally established and a post set by the Government Land Office in 1866. A 1950 M.H.D. right-of-way map for Minn. 91 shows the corner east of the centerline but record data is lacking as to whether or not the corner was found or assumed.

In September, 1973, the Department of Natural Resources, Bureau of Engineering searched the area with a magnetic locator and found nothing. Said Bureau contacted the Register of Deeds and County Engineer but their offices had no record of an established corner.

Also contacted Neil Sankey, 58 more or less, owner of the East Half of the Northeast Quarter of Section 36, who said that the location of the northwest corner of Section 30 used to be monumented by a stone.

In September, 1973, said Bureau assumed the corner and set a railroad spike 2.7' east of the highway centerline in line with fences east and west. The east-west control of said corner was determined by projecting the road centerline south from the northwest corner of Section 30 accepting said centerline as following the west section line along the north 75% of said Section 30. An iron pin was found in place at the northwest corner of Section 30.